 <p>James C. Porter, Director County Government Center 555 County Center, 5th Floor - Redwood City, CA 94063 www.smcgov.org</p>	ADDENDUM NO. 2
	Project No. P30J1 Grant Yard Radio Shop Project Redwood City, CA
	Issue Date: January 11, 2021

Notice to all Contractors submitting bids and to all Contract Document holders:

This Addendum issued by the County of San Mateo Department of Public Works provides for modification and/or clarification of the original Contract Documents for bid. This Addendum forms a part of the Contract Documents. Bidders shall acknowledge receipt and review of this addendum in the space provided on Document 00 41 13 Bid Form.

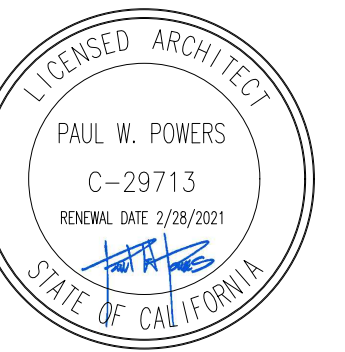
In the event of a conflict between the terms and provisions of this Addendum and the terms and provisions of the Contract Documents, the terms and provisions of this addendum shall control. In all other respects, the Contract Documents shall remain unchanged and in full force and effect.

This Addendum No. 2, dated January 11, 2021, includes the following:

- I. Modifications or Clarifications to the Contract Documents & Contracting Requirements (Drawings, Specifications, Project Manual)**
 - A. Drawing L113 -Stormwater calculations revised, no impact on site design. See Attachment 1.
 - B. Drawing C505, Note 1 - Cleanouts at underdrain PVC piping shown in site plan. view. North biofiltration basin, north infiltration trench and east biofiltration area. See Attachment2.
 - C. Drawing C505, Note 1, 8, and 13 - Cleanout, perforated underdrain, overflow drain inlet, solid PCV drain pipe to manhole shown in plan for clarity at north biofiltration basin. See Attachment2.
 - D. Drawing C505, Notes 1, 8, 13 and 14 - Added for clarity and piping extended at east biofiltration area (Note 11). See Attachment2.
 - E. Drawing C505, Note 14 -Underdrain solid 4" PVC drainage pipe connection distance of approx. 118'-0". See Attachment2.

- F. Drawing C505, Note 15 - Location of PVC observation wells shown to infiltration trench. See 4/C505. See Attachment2.
- G. Drawing C505, Detail 1, 2 and 3 -Concrete retaining end wall added to north biofiltration to create basin. See Attachment2.
- H. Drawing C505, Detail 4 - Waterproof EPDM liner extended to bottom and sides of infiltration trench. See Attachment2.

END OF WRITTEN QUESTIONS/RESPONSES



COUNTY OF SAN MATEO
GRANT YARD RADIO SHOP
 752 CHESTNUT STREET
 REDWOOD CITY, CA 94063

Revisions:
 11-16-2020 BID SET
 01-11-2021 ADD. 2

Client Project Number: P30J1
 APN Number: 054-063-180
 KPA Project Number: 71400
 Date: NOV 16, 2020

Sheet Title:

RUNOFF CALCULATION

Sheet Number:

L113
ATTACHMENT 1

AREA - EXISTING SITE

TOTAL SITE	17,370 sf
BUILDING ROOF AREA	3,374 sf
TOTAL LANDSCAPED AREA	3,295 sf
PERCENTAGE OF SITE LANDSCAPED	18.97 %

AREA BREAKDOWN:

E1	1,282 sf
E2	77 sf
E3	571 sf
E4	1,365 sf
TOTAL	3,295 sf

AREA - NEW SITE

TOTAL SITE	17,370 sf
BUILDING ROOF AREA	9,122 sf
TOTAL AREA OF IRRIGATION ZONE	809 sf
TOTAL AREA OF INFILTRATION ZONE	1,862 sf

PERCENTAGE OF SITE LANDSCAPED AND INFILTRATION AREA 15.38 %

LANDSCAPE AREA BREAKDOWN:

ZONE1	53 sf
ZONE2	171 sf
ZONE3	541 sf
E3.1	44 sf
TOTAL	809 sf

INFILTRATION/BIOINFILTRATION ZONE

ZONE4	467 sf	INFILTRATION
ZONE5	435 sf	BIOINFILTRATION
ZONE6	596 sf	BIOINFILTRATION
ZONE7	364 sf	INFILTRATION
TOTAL	1,862 sf	

C VALUE -- PRE-DEVELOPMENT

	TOTAL AREA (ACRES)	x	C VALUE*	=	
PAVED AREA (IMPERVIOUS)	0.33 ac	x	0.85	=	0.281
LANDSCAPE (PERVIOUS)	0.07 ac	x	0.10	=	0.007
TOTAL	0.40 ac			=	0.288
COMPOSITE C VALUE	= 0.288/0.40 = 0.720				

C VALUE -- UNDEVELOPED

PER COUNTY OF SAN MATEO DRAINAGE MANUAL, IF UNDEVELOPED CONDITIONS OF THE PROJECT SITE ARE UNKNOWN, A RUNOFF COEFFICIENT OF C=0.3 SHALL BE USED FOR UNDEVELOPED PEAK FLOW CALCULATIONS.

C VALUE -- POST-DEVELOPMENT

	TOTAL AREA (ACRES)	x	C VALUE*	=	
PAVED AREA (IMPERVIOUS)	0.337 ac	x	0.85	=	0.286
LANDSCAPE (PERVIOUS)	0.02 ac	x	0.10	=	0.002
INFILTRATION	0.043 ac	x	0.00	=	0.000
TOTAL	0.40 ac			=	0.288
COMPOSITE C VALUE	= 0.288/0.40 = 0.720				

* SOURCE: C VALUE IS CITED ACCORDING TO RAINFALL RUNOFF DATA FROM SAN MATEO COUNTY GUIDELINES FOR DRAINAGE REVIEW AND RUNOFF COEFFICIENT (C) FACT SHEET FROM CALIFORNIA WATER BOARDS' STATE WATER RESOURCES CONTROL BOARD 5.1.3 FS-(RC) 2011

RAINFALL INTENSITY*

SAN MATEO COUNTY 0.728 IN/HR

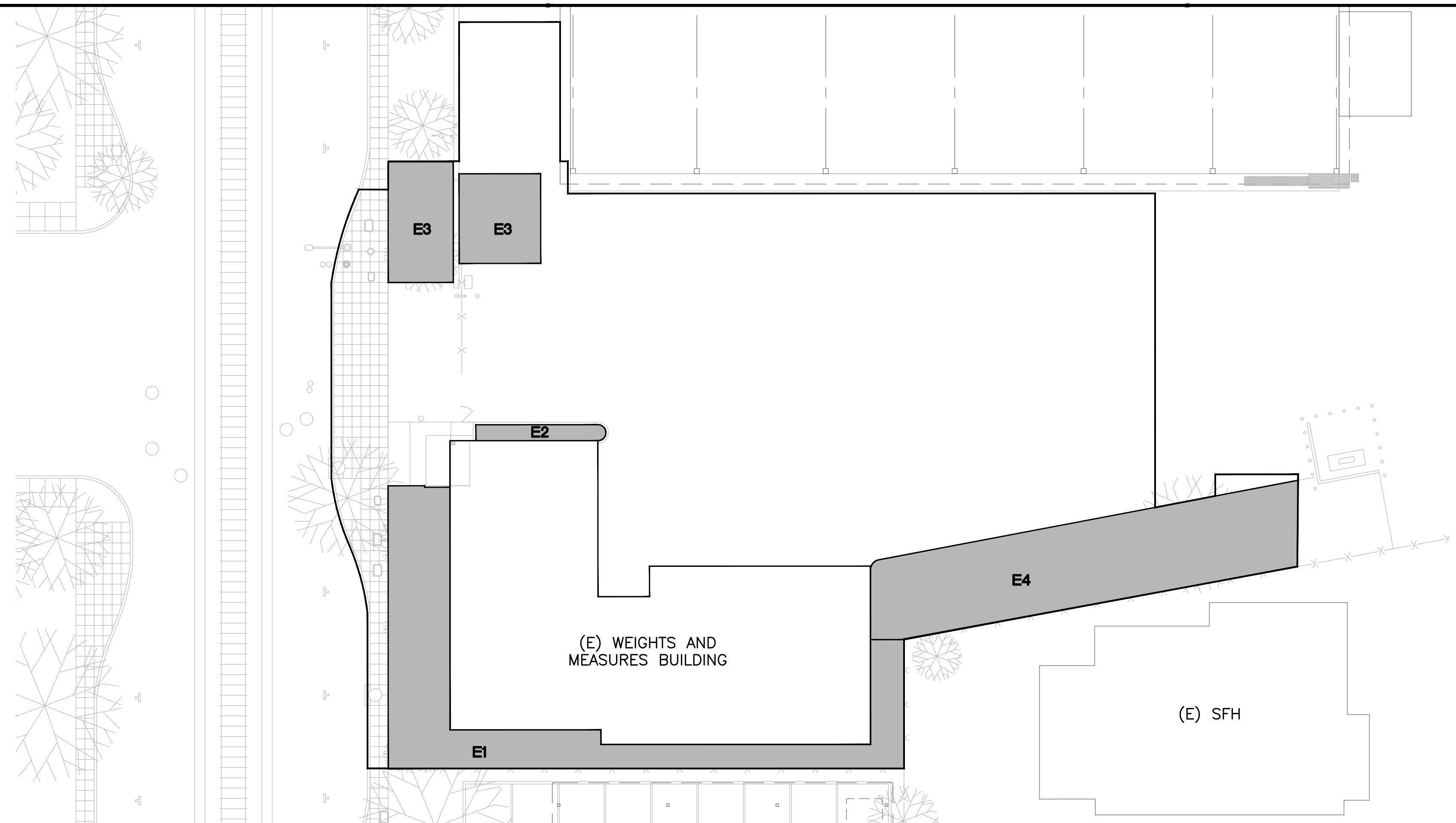
* SOURCE: SAN MATEO COUNTY REQUIRES THAT THE PROJECT RUNOFF FROM A 10-YEAR 1-HR DURATION DESIGN STORM BE RETAINED ONSITE.

RUNOFF CALCULATION

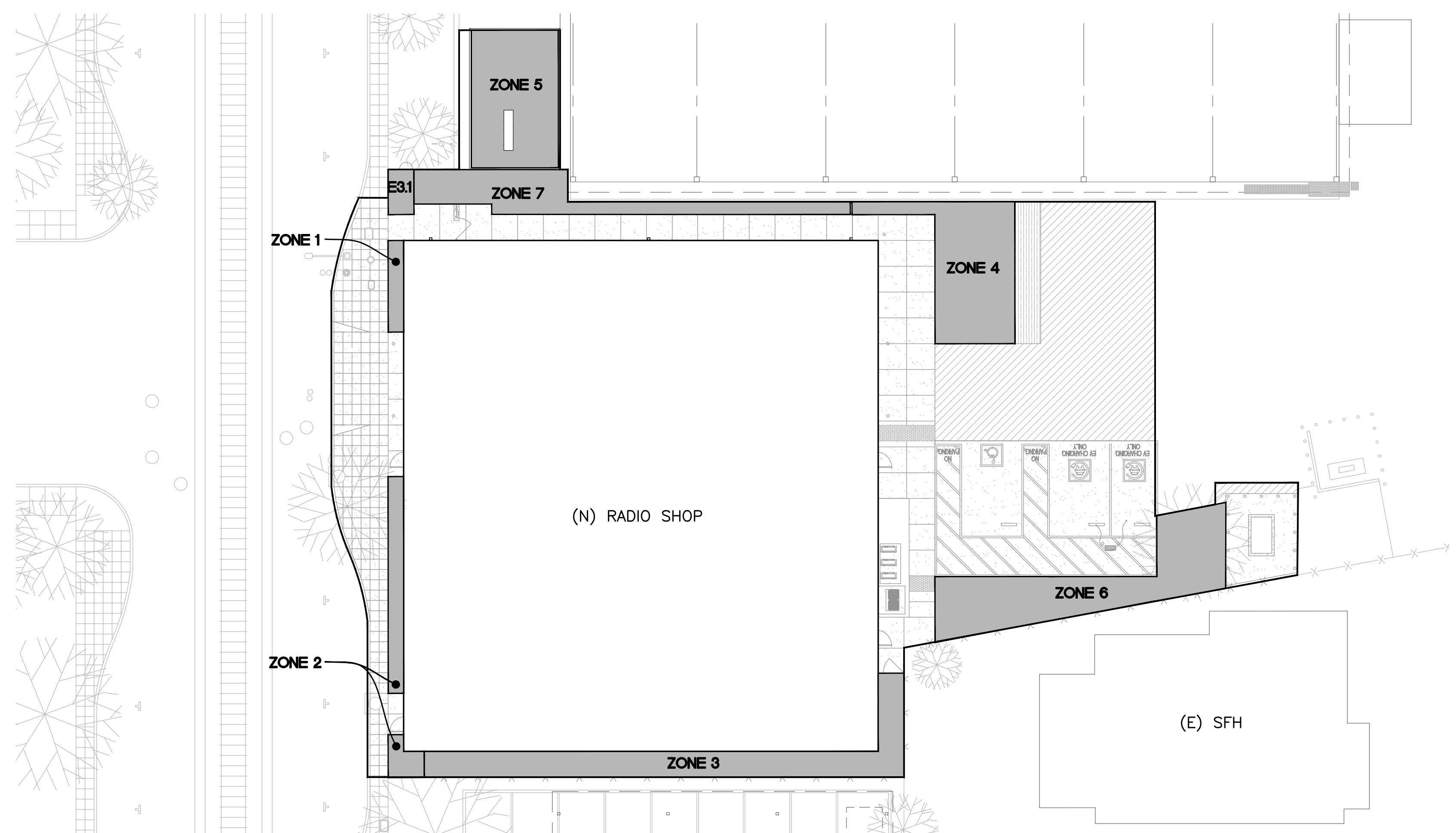
UNDEVELOPED	POST-DEVELOPMENT
Q = C x I x A	Q = C x I x A
Q = 0.3 x 0.728 x 0.40	Q = 0.720 x 0.728 x 0.40
Q = 0.08736 cfs	Q = 0.2097 cfs

GENERAL NOTES:

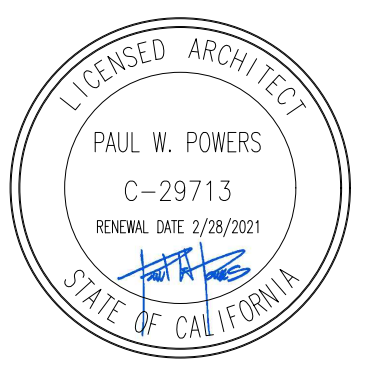
- DENUTED AREAS OF LANDSCAPE (E1 THROUGH E3) SHALL BE REPLACED BY NEW SOIL, MULCH AND VEGETATION (IRRIGATION ZONES 1 THROUGH 3).
- EXISTING ERODED PARKING LOT PAVEMENT WILL BE REPLACED WITH NEW ASPHALT PAVEMENT. EXISTING DRAIN INLETS WILL BE RETAINED.
- NEW ROOF DRAIN LEADERS WILL CONNECT TO BIORETENTION BASIN WITH OVERFLOW DRAIN CONNECTION TO CITY STORMSEWER IN CHESTNUT STREET.



PLAN NORTH
1 EXISTING PLAN
 1/16" = 1'-0"
 0 8' 16' 32'



PLAN NORTH
2 NEW PLAN
 1/16" = 1'-0"
 0 8' 16' 32'



COUNTY OF SAN MATEO
GRANT YARD RADIO SHOP
 752 CHESTNUT STREET
 REDWOOD CITY, CA 94063

Revisions:
 11-16-2020 BID SET
 01-11-2021 ADD. 2

Client Project Number: P30J1
 APN Number: 054-063-180
 KPA Project Number: 71400
 Date: NOV 16, 2020

Sheet Title:
STORMWATER TREATMENT

Sheet Number:

C505
5HH57 < A9BH'8

GENERAL NOTES:

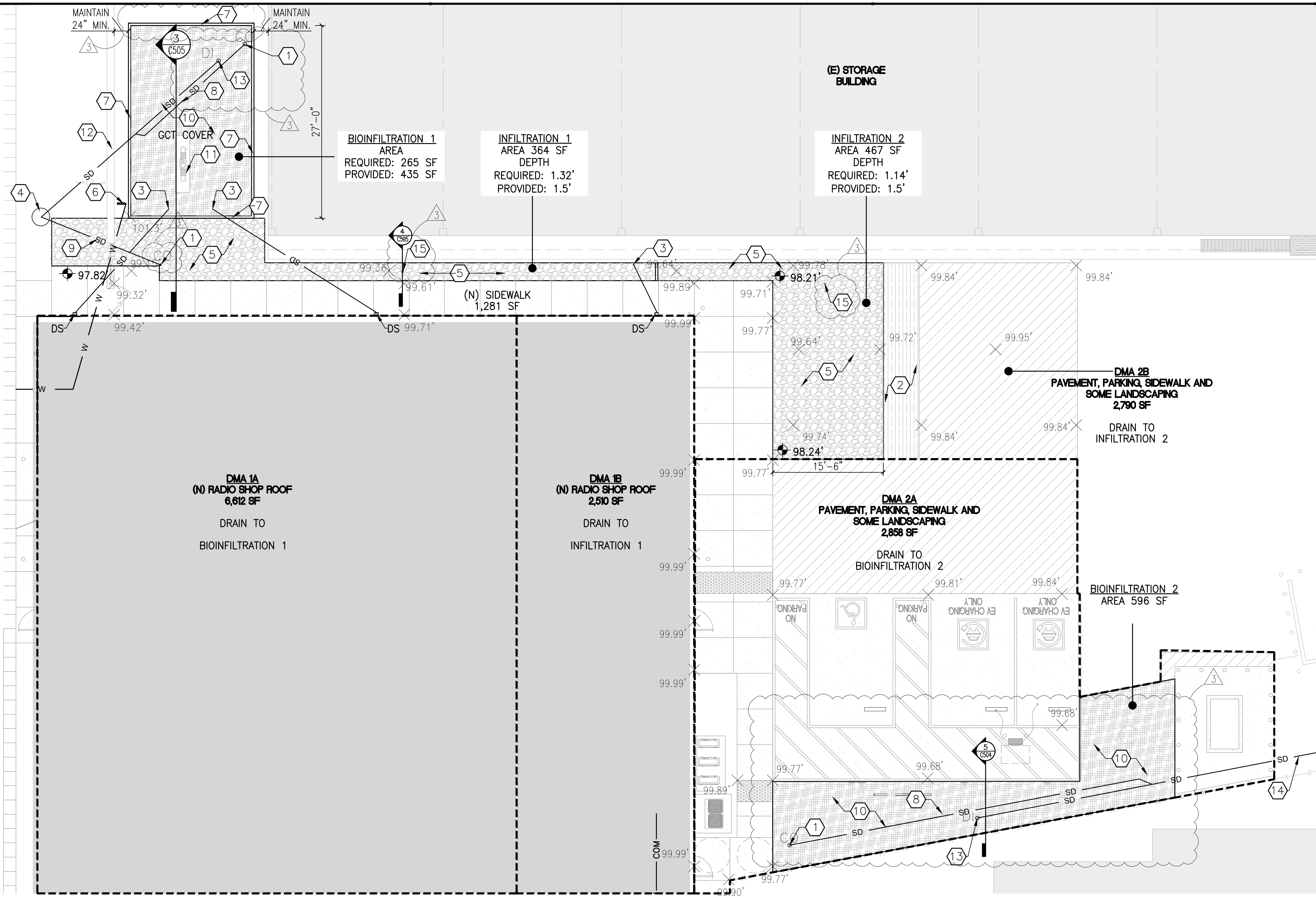
1. FIELD VERIFY ALL DIMENSIONS, BRING ANY DISCREPANCIES TO THE ATTENTION OF THE ARCHITECT/ENGINEER FOR FINAL DECISION.
2. SEE SHEET G001 FOR LEGENDS AND ABBREVIATIONS
3. ALL PAVEMENTS AND PAVEMENT MARKINGS ARE TO MEET ADA AND CBC ACCESSIBILITY REQUIREMENTS.
4. SEE SHEET C121 FOR TOPOGRAPHY PLAN

LEGEND:

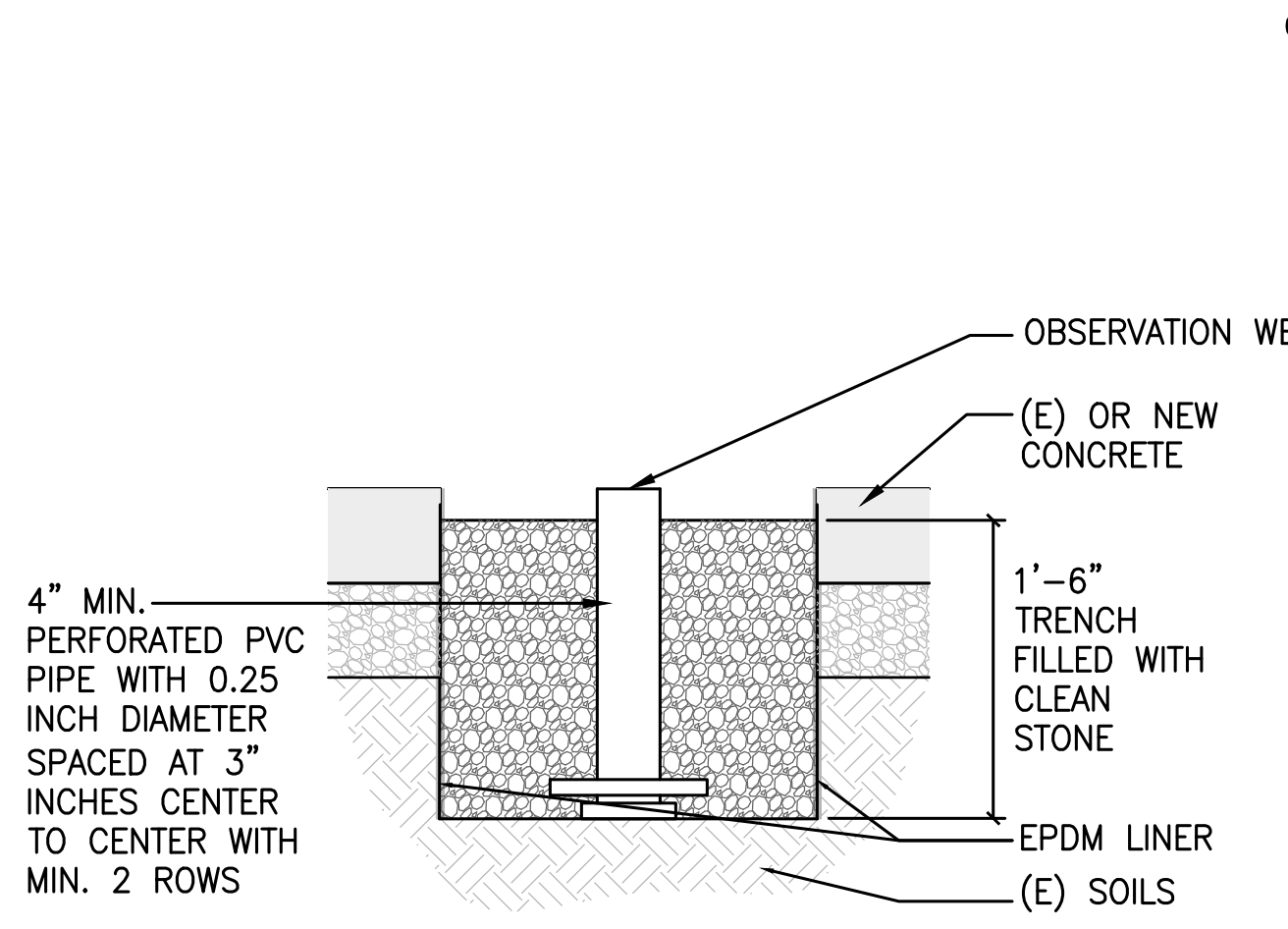
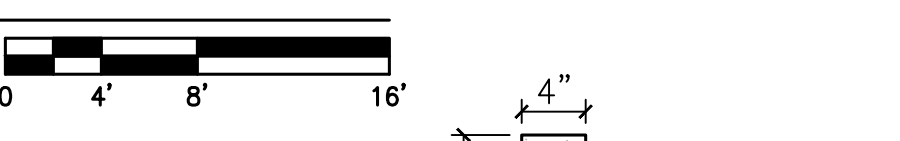
- (N) ASPHALT REPLACEMENT
- (N) CONCRETE
- (N) TRENCH
- (N) GROOVED PAVEMENT
- (N) LANDSCAPE AREA, SEE L101
- BOTTOM OF TRENCH ELEVATION

KEYED NOTES:

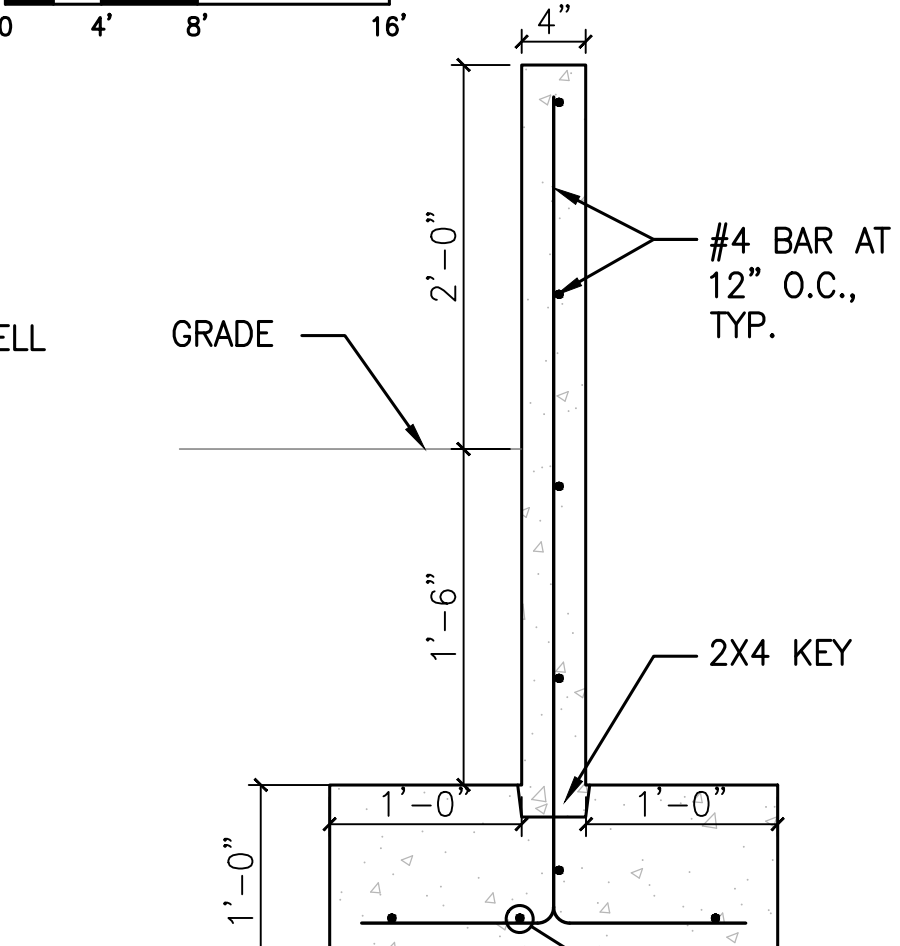
- 1 NEW CLEAN OUT
- 2 5' WIDE GROOVED PAVEMENT
- 3 (N) POP-UP DRAINAGE EMITTER
- 4 NEW STORM DRAIN MANHOLE STRUCTURE AND PIPING. SEE C503
- 5 NEW TRENCH, SEE DETAIL 4
- 6 IRRIGATION SYSTEMS, SEE L111 FOR DETAILS
- 7 2' RETAINING WALL
- 8 PERFORATED UNDERDRAIN PIPE
- 9 4" PVC OVERFLOW DRAIN WITH ELEVATED DRAIN
- 10 BIOINFILTRATION AREA
- 11 BACKFLOW PREVENTER
- 12 EXISTING PROPERTY FENCE WALL
- 13 OVERFLOW DRAIN INLET
- 14 NEW 4" PIPE CONNECT TO (E) SD SYSTEM, APPROX. 118'
- 15 OBSERVATION WELL



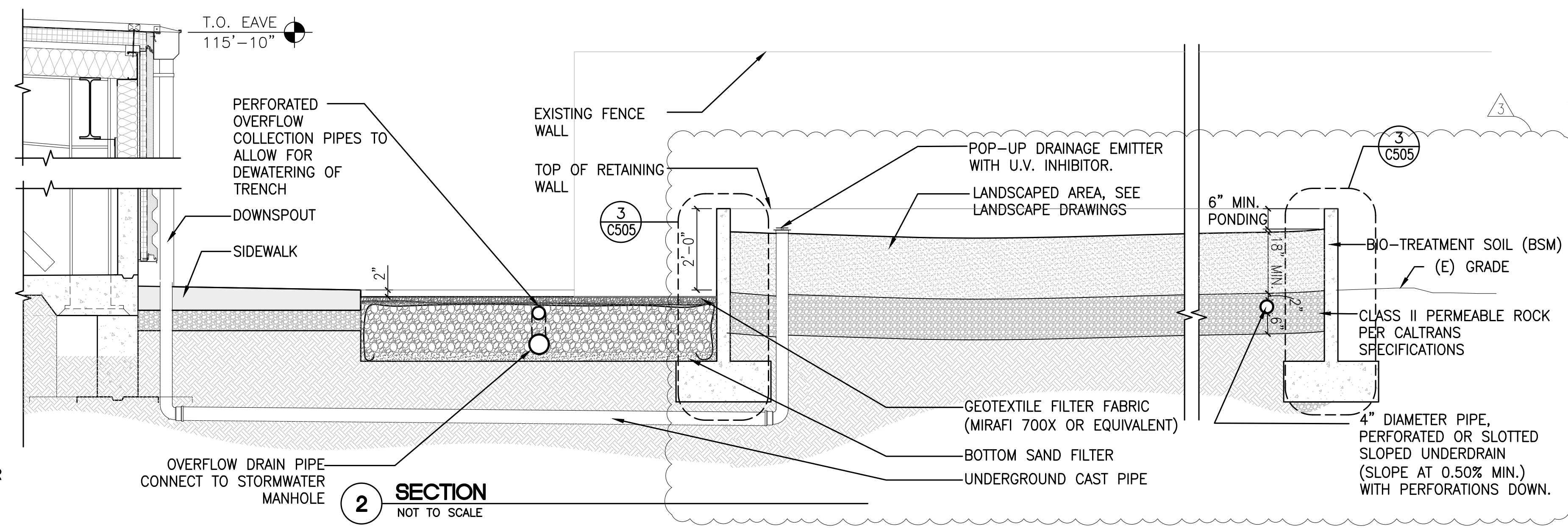
PLAN NORTH
1 BIOINFILTRATION BASIN WITH UNDERDRAIN
 1/8" = 1'-0"



4 INFILTRATION TRENCH WITH OBSERVATION WELL
 NOT TO SCALE



3 RETAINING WALL
 NOT TO SCALE



2 SECTION
 NOT TO SCALE